



Activate your Teladoc Primary360 benefit, the future of primary care

Download the Teladoc app  

Activate Teladoc Primary360, your new virtual primary care benefit

<FirstName> <LastName>
<Address Line 1>
<Address Line 2>
<City> <ST><Zip_Code>

Made available by:



HOMESTEAD
SMART HEALTH PLANS



Introducing Primary360, the way primary care should be

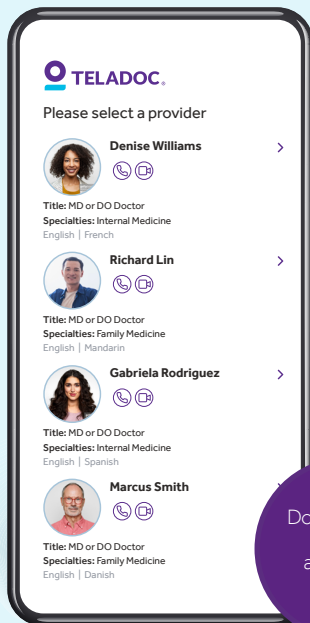


Welcome to Primary360, primary care *re-imagined*

Primary360 is your **new virtual primary care benefit** that helps you take charge of your health—mind and body. Schedule virtual annual checkups or ongoing care with a primary care provider (PCP) of your choice.

It's already part of your benefits through Homestead Smart Health Plans for \$0 per visit.

Activate your Teladoc account today,
and schedule your virtual annual checkup.

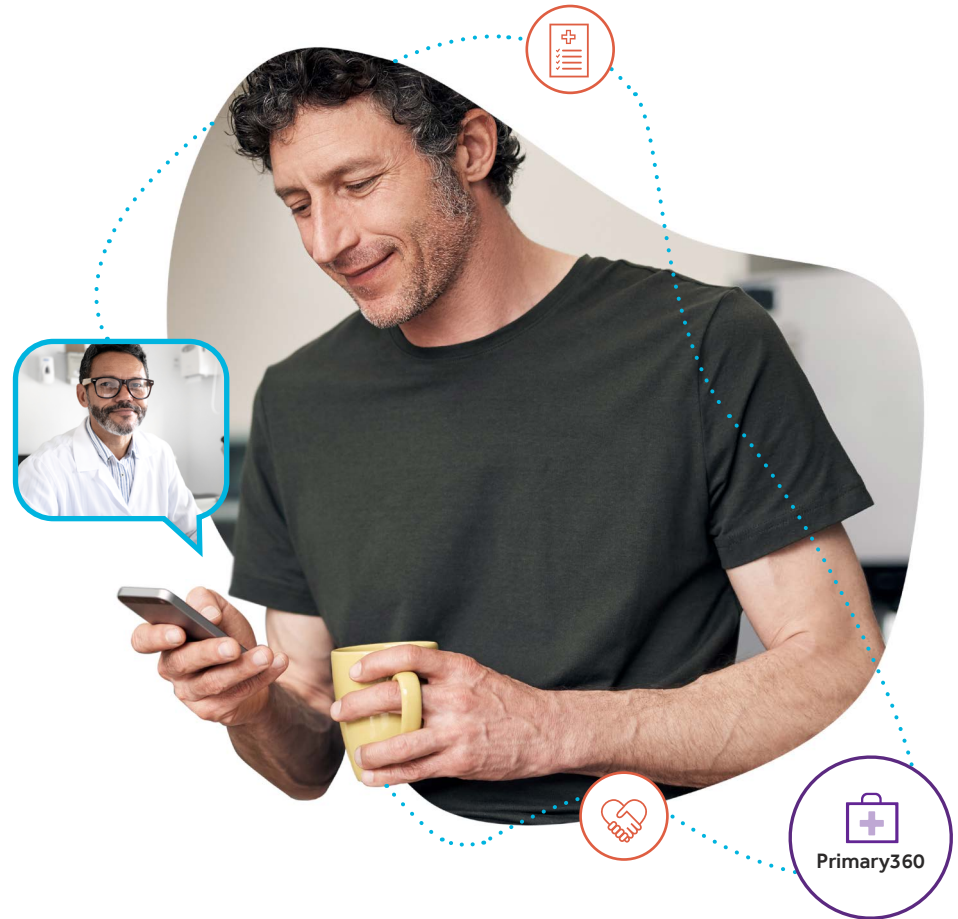


Download the
Teladoc
app today.



What's included in Primary360:

- Your annual checkup and ongoing care scheduled within days
- Unlimited access to a dedicated Care Team
- Referrals to in-person (and in-network) specialists if needed
- A custom care plan with clear steps to maintain your health



Primary360 costs \$0 per visit

Activate your Teladoc Primary360 benefit today

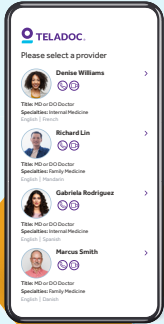
Download the app  | 

Visit Teladoc.com/Primary360

Call 800-835-2362

Seamless virtual primary care from day one

How Teladoc Primary360 works



1 Select your virtual PCP

Scroll through in-network primary care providers on the Teladoc app to see bios and pictures so you can find the best fit.



2 Schedule flexible virtual primary care visits

With Primary360, your care is always on your time. Virtual visits are available Monday-Saturday, and you have unlimited access to your Care Team.



3 Get support at any time

A member of your Care Team will reach out to support you throughout your care experience.



4 There's no rush to your visit

Your PCP will get to know you, understand your health, address concerns and discuss lab results without rushing you.



Your care plan has been uploaded and is ready for your review. Let me know if you have any questions.
Sharon, Care Team Nurse

Sent 5:46pm

It looks great, thank you!

Sent 8:00am

5 Know exactly what your next steps are

Get clear direction for your health with a custom care plan, specialist referrals and reminders to stay on track.

Ahhh,
now that's how
primary care should be

You've got support
every step of the way.

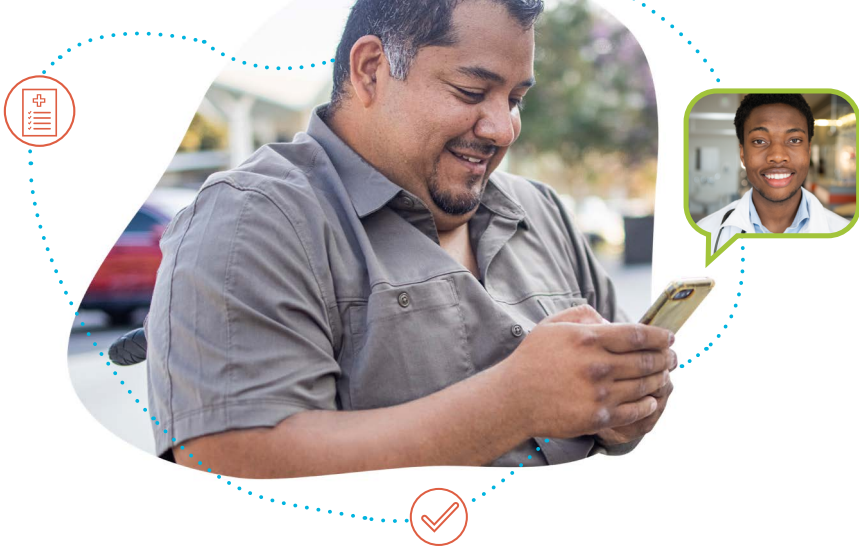


Activate your Teladoc Primary360 benefit today

Download the app  | 

Visit Teladoc.com/Primary360

Call 800-835-2362



All of your Teladoc services:



PRIMARY360

\$0/visit



GENERAL MEDICAL

\$0/visit

For immediate care after hours, speak to a licensed doctor 24/7 by phone or video. We diagnose, treat and prescribe medicine if needed for:

- Cold and flu symptoms
- Sinus infections
- Stomachaches
- Headaches
- Pink eye or rashes
- Allergies
- Bronchitis
- UTIs
- And more

“My doctor could not have been more attentive, supportive, encouraging, interested and knowledgeable. **I had her full attention during our nearly 45 minutes together.**”

Set up your Teladoc account to see what other services you have access to through Homestead Smart Health Plans.

**Your care.
Your time.
Your terms.**



Scan the code to activate your Teladoc Primary360 benefit

Teladoc is not available internationally.

<Teladoc complies with applicable Federal civil rights laws and does not discriminate on the basis of race, color, national origin, age, disability or sex. Para obtener ayuda en su idioma, llame sin costo alguno al número que aparece en su tarjeta de identificación. (TTY: 1-855-636-1578) 如需以您使用語言的協助，請撥打 ID 卡上所列的免付費號碼。(TTY: 1-855-636-1578)>

© Teladoc Health, Inc. All rights reserved. Teladoc and the Teladoc logo are registered trademarks of Teladoc Health, Inc. All programs and services are subject to applicable terms and conditions.